

Programming dendritic cells to induce T_H2 and tolerogenic responses

Bali Pulendran, Hua Tang & Santhakumar Manicassamy

A fundamental puzzle in immunology is how the immune system decides what types of immune responses to launch against different stimuli. Although much is known about control of T helper type 1 (T_H1) and T_H17 responses, the mechanisms that initiate T_H2 and T regulatory (T_{reg}) responses remain obscure. Emerging studies suggest a fundamental role for the innate immune system, particularly dendritic cells (DCs), in this process. We review these studies, and suggest that the innate control of T_H2 and T_{reg} responses can be viewed as different hierarchies of organization, in which DCs, their innate receptors and signaling networks, and their interactions with other cells and local microenvironments represent different levels of the hierarchy.

Encounter with a microbe poses several decision-making challenges to the immune system. To respond, or not to respond? If making a response, then what type should it be? Indeed, a hallmark of the immune system is its ability to induce distinct types of responses against different classes of pathogens. Twenty-five years ago, Coffman and Mosmann made the seminal observation that $CD4^+$ T helper (T_H) cell clones can be divided into two classes, T_H1 and T_H2 , on the basis of their cytokine profiles¹. Interferon- γ (IFN- γ)-secreting T_H1 cells are effective at combating intracellular bacteria and viruses, by means of the activation of macrophages and NK cells and expansion of cytotoxic T cells (CTLs). In contrast, T_H2 cells, whose cytokines (interleukin (IL)-4, IL-5 and IL-13) direct immunoglobulin E (IgE)- and eosinophil-mediated destruction of pathogens, are effective at controlling helminths². Although helminths are considered the prototypic T_H2 -inducing stimuli, bacteria, viruses and allergens can also induce T_H2 responses. More recently a third subset of T_H cells, the T_H17 subset, has been discovered. T_H17 cells produce IL-17A, IL-17F and IL-22 and are thought to be key in immunity against extracellular bacteria and fungi³. At around the same time, it was demonstrated that naive $CD4^+$ T cells could be induced to differentiate into Foxp3⁺ T regulatory (T_{reg}) cells by T cell antigen receptor (TCR) stimulation in the presence of transforming growth factor (TGF)- β and IL-2 (ref. 4). T_{reg} cells regulate T_H1 , T_H17 and T_H2 responses, which if unchecked can lead to inflammatory disorders such as autoimmunity (T_H1 , T_H17 responses) and allergy (T_H2 responses). T_{reg} cells are also important in maintaining immune tolerance against self antigens^{2,5}, and pathogens have evolved strategies that induce T_{reg} cells, thereby evading the host immune response while preventing immunopathology, thus creating a state of détente⁵. The differentiation of these T_H cells is regulated by distinct transcription factors (T-bet and signal transducer and activator of transcription (STAT)-4 for T_H1 cells, GATA3 and STAT5 for T_H2 cells, ROR γ t and STAT3 for T_H17 cells, and Foxp3 and STAT5

for T_{reg} cells)². In addition to these subsets, other subsets have been identified, including IL-10-producing 'Tr1 cells'; TGF- β -producing ' T_H3 cells', which also suppress T_H1 , T_H17 and T_H2 responses and induce immunological tolerance; IL-9-producing ' T_H9 cells'; and T follicular cells (' T_{FH} cells'), located within the B cell-rich follicles of lymphoid organs². The lineage relationship between these subsets and T_H1 , T_H2 , T_H17 and T_{reg} cells are still being defined.

The capacity of distinct T_H responses to protect against different pathogens and the immunopathology that can develop from their unbridled activation place a great premium on understanding the cellular and molecular mechanisms that control such responses, with a view to the rational design of vaccines and therapeutics. Advances in immunology over the past decade have revealed a fundamental role for the innate immune system in sensing pathogens and tuning the quality of T_H responses. Although there has been much progress in understanding the role of innate immunity in inducing T_H1 and T_H17 responses², we understand very little about its role in initiating T_H2 and 'tolerogenic' (T_{reg} , Tr1 and T_H3 cell) responses. However, there are emerging insights into the roles of DC subsets, pathogen recognition receptors (PRRs), signaling pathways and accessory cell types that orchestrate T_H2 and tolerogenic responses. In the present Review, we will summarize these advances, highlight unanswered questions and offer a conceptual framework for understanding the innate control of T_H2 and tolerogenic responses.

Hierarchies of organization in the innate immune system

According to the classical model (Fig. 1a), DCs are activated by microbial stimuli signaling through PRRs, which then program them to induce distinct innate responses that shape the type of T_H response⁶. However, entry of a microbe into the body can also activate a range of other cell types, such as NK cells, NK T cells, basophils, mast cells, myeloid suppressor cells, T_{reg} cells, tissue epithelial cells and stromal cells, all of which influence DC function (Fig. 1b). Therefore, in addition to the direct DC activation by microbes, DCs orchestrate the concerted action of a network of cell types. Thus, a unified model of the cellular and molecular mechanisms that initiate and control T_H2

Emory Vaccine Center, Atlanta, Georgia, USA. Correspondence should be addressed to B.P. (bpulend@emory.edu).

Published online 20 July 2010; doi:10.1038/ni.1894

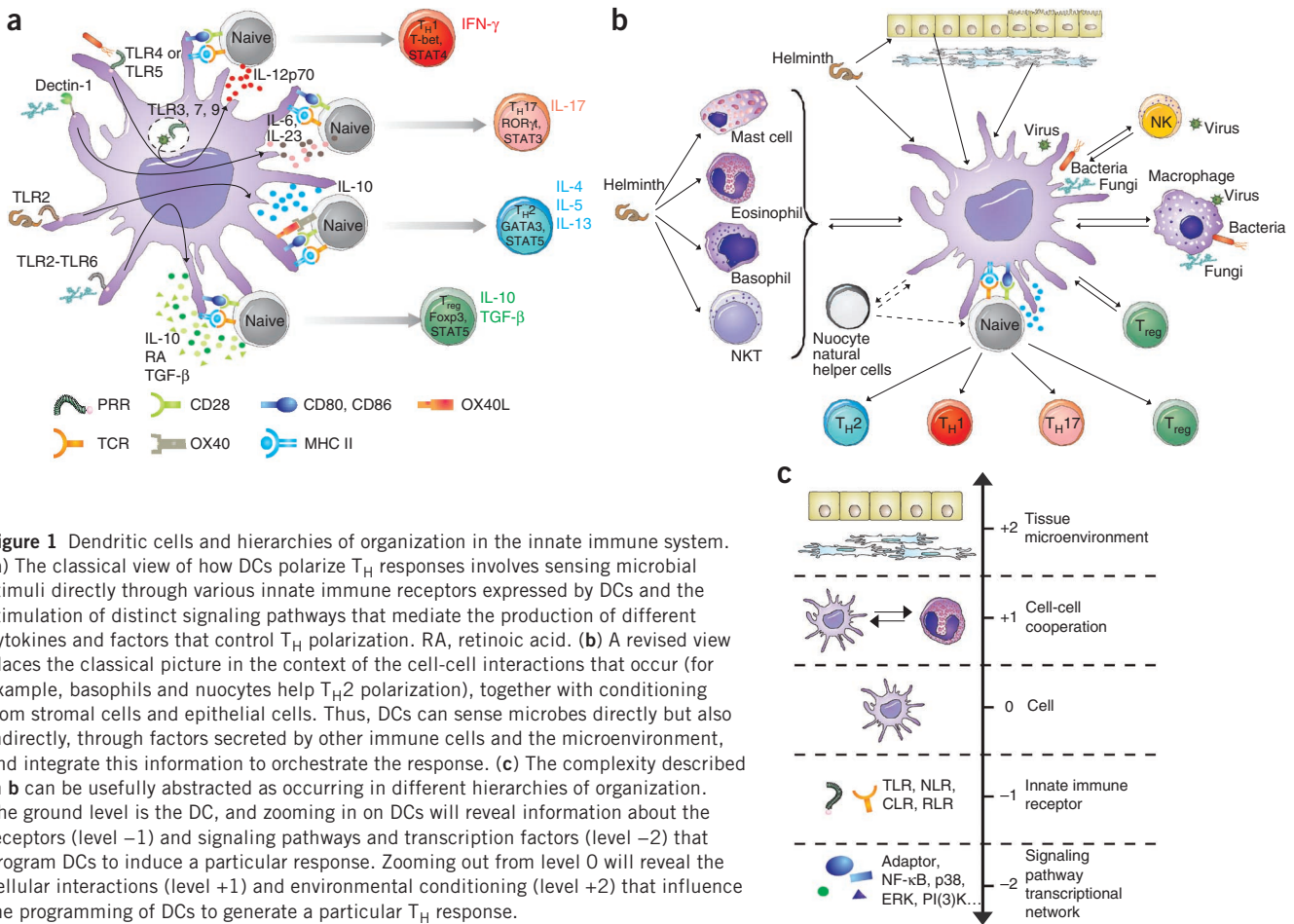


Figure 1 Dendritic cells and hierarchies of organization in the innate immune system. (a) The classical view of how DCs polarize T_H responses involves sensing microbial stimuli directly through various innate immune receptors expressed by DCs and the stimulation of distinct signaling pathways that mediate the production of different cytokines and factors that control T_H polarization. RA, retinoic acid. (b) A revised view places the classical picture in the context of the cell-cell interactions that occur (for example, basophils and nuocytes help T_{H2} polarization), together with conditioning from stromal cells and epithelial cells. Thus, DCs can sense microbes directly but also indirectly, through factors secreted by other immune cells and the microenvironment, and integrate this information to orchestrate the response. (c) The complexity described in b can be usefully abstracted as occurring in different hierarchies of organization. The ground level is the DC, and zooming in on DCs will reveal information about the receptors (level -1) and signaling pathways and transcription factors (level -2) that program DCs to induce a particular response. Zooming out from level 0 will reveal the cellular interactions (level +1) and environmental conditioning (level +2) that influence the programming of DCs to generate a particular T_H response.

and tolerogenic responses is likely to result from studying different hierarchies of organization in the innate immune system (Fig. 1c). The cell can be considered the ‘ground level’ of this hierarchy (level 0), and zooming in on the cell to examine innate receptors (hierarchy level -1) and signaling networks (hierarchy level -2) offers more detailed levels of abstraction. In contrast, zooming out from the cell allows more global views of multicellular cooperation (for example, between DCs and basophils or DCs and stromal cells—hierarchy level +1) and the influence of tissue microenvironments (for example, intestine versus lung—hierarchy level +2).

Hierarchy level 0: cells

DCs can prime T_{H2} responses, and distinct DC subsets induce different T_H responses (Table 1). For example, in mouse spleens there are two main phenotypically and functionally distinct DC subsets. CD11c⁺CD8 α ⁺DEC205⁺ DCs found in the T cell-rich areas can be induced to produce copious IL-12p70. In contrast, CD11c⁺CD8 α ⁻DEC205⁻ DCs are located in the marginal zones, and generally do not produce much IL-12p70, but can be induced to produce IL-10 (refs. 7,8). Consistent with this, adoptive transfer of antigen-pulsed CD8 α ⁺ versus CD8 α ⁻ mouse splenic DCs into mice differentially induces T_{H2} versus T_{H1} responses *in vivo*^{7,8}. Furthermore, targeting of antigen to these subsets using specific antibody-antigen constructs results in induction of T_{H1} versus T_{H2} responses *in vivo*⁹. Resting respiratory tract DCs preferentially stimulate T_{H2} cells¹⁰, and myeloid DCs induce T_{H2} responses to inhaled antigen, leading to eosinophilic airway inflammation¹¹. In humans,

plasmacytoid DCs in the blood¹² and Langerhans cells in the skin¹³ can preferentially induce T_{H2} responses, and in some cases also induce T_{reg} cells.

In addition to their functional specializations, DCs also show a great deal of functional plasticity. Thus, various microbial stimuli, including *Porphyromonas gingivalis* lipopolysaccharide (LPS)¹⁴, fungal products^{15,16}, *Schistosoma mansoni* egg antigen (SEA¹⁷), Omega-1 (a T2 RNase glycoprotein derived from SEA)^{18,19}, helminths²⁰,

Table 1 Evidence that DCs induce T_{H2} responses

Observation	References
Adoptive transfer of specific subsets of DCs (for example, mouse splenic CD8 α ⁻ DCs) preferentially induces T _{H2} responses <i>in vivo</i> . In humans, specific DC subsets induce T _{H2} responses	7,8,10–13,84
Targeting antigen to specific DC subsets preferentially induces T _{H2} responses	9
Specific microbial stimuli (for example, <i>P. gingivalis</i> LPS, fungal proteases, cholera toxin, SEA) program DCs to induce T _{H2} responses	14–23,26
TSLP conditions DCs to induce T _{H2} responses	28–30
Allergens and mediators of allergy program DCs to induce T _{H2} responses	23–26,31,84
<i>In vivo</i> depletion of lung CD11c ⁺ DCs during allergen challenge abrogates asthma	32
Immune responses induced by the T _{H2} -inducing adjuvant alum are dependent on DCs	33



Table 2 Evidence for involvement of DCs in inducing tolerogenic responses

Observation	References
Immature DCs induce anergy of Tr1 cells or Foxp3 ⁺ T _{reg} cells	Reviewed in 6,48
Disruption of E-cadherin-mediated DC-DC interactions triggers an alternative pathway of maturation mediated by β -catenin and programs the DCs to a tolerogenic state	49
Exposure of DCs to anti-inflammatory and immunosuppressive agents programs them to a tolerogenic state	Reviewed in 50,51
Capture of apoptotic cells or self antigens by DCs in the steady state programs them to a tolerogenic state	48,52,129
Specific microbial stimuli (for example, zymosan, <i>Y. pestis</i> virulence factor LcrV, phosphatidylserine from <i>S. mansoni</i>) program DCs to induce T _{reg} cells	56–58,75,76
Specific DC subsets in mucosal sites (for example, CD103 ⁺ DCs in intestinal lamina propria and mesenteric lymph nodes) are programmed to induce T _{reg} cells	60–62

cholera toxin²¹, allergens^{22–26} or prostaglandin E₂²⁷ can all program DCs to induce T_{H2} responses. Importantly, the allergic mediators thymic stromal lymphopoietin (TSLP), which is produced by stromal cells^{28–30}, and histamine³¹ can also condition DCs to induce T_{H2} responses. Thus DCs can prime T_{H2} responses; but evidence that they actually do comes from studies in which the conditional ablation of DCs *in vivo* using CD11c-diphtheria toxin (DTR) mice abrogates allergen-induced asthma³² and alum induced T_{H2} responses³³. In addition, T_{H2} response to the cysteine protease papain is dependent on DCs and is mediated by dermal DCs³⁴.

A key issue is the nature of the molecules that induce T_{H2} responses. *In vivo*, IL-4 is not always required for T_{H2} polarization. The nematode *Nippostrongylus brasiliensis* induces T_{H2} responses that are diminished, but not absent, in mice that are deficient in IL-4R α or STAT6; but GATA3 remains essential. In contrast, the generation of T_{H2} responses to the nematode *Trichuris muris* requires IL-4 (ref. 2). If IL-4 is required for T_{H2} differentiation, what is the cellular source of the initial IL-4 production? As naive T cells do not produce IL-4, this raises the chicken-and-egg question of what induces T_{H2} cells to make IL-4 in the first place. Basophils and mast cells promote T_{H2} responses by rapidly producing IL-4 upon cross-linking of their Fc ϵ RI receptors, through preexisting antigen-IgE complexes^{35–39}. This might seem paradoxical, because the production of such antibodies would have required the existence of primed CD4⁺ T_{H2} cells specific to that antigen in the first place. However, microbial stimuli and allergens can directly stimulate basophils and mast cells to produce IL-4. Basophils are critical in priming T_{H2} responses against helminths and protein allergens, and this process will be discussed in detail below^{40–43}. CD4⁺NK1.1⁺ ('natural killer T', or NKT) cells also produce large amounts of IL-4 rapidly after TCR triggering⁴⁴. However, mice lacking NKT cells, such as CD1d- or β_2 -microglobulin knockout mice, launch normal T_{H2} responses, so these cells might not be essential contributors of IL-4 (ref. 45).

Apart from IL-4, are there other signals that induce T_{H2} responses? One model posits that absence of IL-12p70 production by DCs results in a 'default' T_{H2} response. Thus, *P. gingivalis* LPS, cholera toxin, SEA, TSLP and other stimuli condition DCs to induce T_{H2} responses, in part by suppression of IL-12 in DCs^{14–31}. An alternative model is that other molecules on DCs, such as OX40-1 (ref. 29) and the Notch ligands Jagged-1 and Jagged-2 can induce T_{H2} responses⁴⁶. In addition, production of stromal or epithelial cell-derived mediators such as TSLP, IL-33 or IL-25 can exert potent influences on DCs and program them to induce T_{H2} responses.

What are the roles of DCs in tolerogenic responses? Their importance in negative selection in the thymus and central tolerance was established by targeted expression of MHC class II molecules on DCs⁴⁷. In the periphery, recent work has highlighted their role in suppressing immune responses and inducing immune tolerance (Table 2). The tolerogenic functions of DCs can depend on their maturation stage, anti-inflammatory and immunosuppressive agents, the nature of the microbial stimuli, and the tissue micro-environment⁴⁸. Immature DCs that express low surface amounts of MHC and costimulatory molecules induce suboptimal T cell priming, often leading to T cell anergy or tolerance^{6,48}. Interestingly, an alternative form of DC maturation, which is triggered by alterations in E-cadherin-mediated DC-DC adhesion, can occur under steady-state conditions⁴⁹. Selective disruption of these interactions induces the typical features of DC maturation, including upregulation of costimulatory molecules, MHC class II and chemokine receptors. These events are triggered at least in part by activation of the β -catenin pathway. However, unlike DCs induced to mature by microbial products, E-cadherin-stimulated DCs do not release immunostimulatory cytokines, and they induce tolerogenic T cells⁴⁹.

In addition to their dependency on the maturation stage, tolerogenic DCs can also be induced by exposure to various anti-inflammatory and immunosuppressive agents, such as IL-10 and TGF- β 1, inducers of cyclic AMP such as prostaglandin E₂, the vitamin D₃ metabolite 1 α ,25-dihydroxyvitamin D₃ and its analogs⁵⁰. Another mechanism by which DCs can promote tolerogenic responses involves tryptophan catabolism by indoleamine 2,3-dioxygenase (IDO)⁵¹, which can be induced by certain Toll-like receptor (TLR) ligands or CTLA-4. Furthermore, DCs can promote tolerance upon capture of antigens from dying cells or of harmless self and environmental antigens^{48,50,52,53}. A key role for DCs in inducing tolerance *in vivo* was initially noted in experiments involving targeting antigen into DCs through the endocytic receptor DEC-205 (refs. 48,54), which is expressed on CD8 α ⁺ DCs.

Microbes have evolved several strategies for programming DCs to induce T_{reg} cells. For instance, persistent interactions between microbes and hosts (as would occur during chronic infections, or in the commensal-rich intestine) could result in excessive inflammation and immunopathology, which is evolutionarily undesirable for the host or microbe. Therefore, microbes have evolved strategies to maintain immune homeostasis by inducing T_{reg} cells that control unbridled host immunity. For example, different fungal morphotypes (that is, conidia or hyphae) of *Candida albicans* induce different intracellular signaling which program DCs to stimulate distinct T_H responses⁵⁵. Thus, conidia stimulate inflammatory DCs that initiate T_{H17} or T_{H2} responses, whereas hyphae program DCs to activate T_{H1} or T_{reg} cells⁵⁵. The capacity to modulate the T_{H17}-T_{reg} cell balance might be exploited by the fungus to achieve commensalism or pathogenicity. Furthermore, phosphatidylserine and lysophosphatidylserines from *S. mansoni* condition DCs through TLR2 signaling to induce T_{reg} cells⁵⁶. Filamentous hemagglutinin (FHA) from the bacteria *Bordetella pertussis* induces DCs to produce IL-10 and prime Tr1 cells⁵⁷. *Yersinia pestis* is known to activate DCs by means of the dimer of TLR2 and TLR6 to induce T_{reg} cells⁵⁸.

Recent studies have highlighted the existence of tolerogenic antigen-presenting cells in mucosal environments. Given the enormous burden of microbial stimuli (>10¹⁴ commensal microorganisms in the intestine⁵⁹), intestinal DCs and macrophages have regulatory mechanisms to prevent excessive inflammation. For instance, there is an active suppression of proinflammatory cytokine production by immunoregulatory cytokines, such as IL-10 (ref. 5). Intestinal DCs

Table 3 Innate receptors that control T_H2 or tolerogenic responses

Receptor	Comments	References
TLRs		
TLR2	Several ligands of TLR2 induce T _H 2 or T _{reg} responses	14,58,68–81
TLR4	Low doses of inhaled LPS signal through TLR4 to induce T _H 2 responses to inhaled antigens; Der p2 functions as allergen because of its ability to bind LPS and mimic the function of MD2, a component of TLR4 complex; house dust mite allergen induces asthma through TLR4	83,84
NLRs		
NOD1 and NOD2	Innate sensing of peptidoglycan by Nod1 and Nod2 induces T _H 2 responses	87,88
NALP3	Alum, a T _H 2-inducing adjuvant, depends partly on the NALP3 inflammasome for its immunogenicity; however, the mechanism by which it induces T _H 2 responses is unclear	89–91
CLRs		
DC-SIGN	Mycobacteria target DC-SIGN to suppress DC function; <i>H. pylori</i> Lewis antigen induces T _H 2 responses through DC-SIGN; the allergen derived from <i>A. hypogaea</i> induces T _H 2 responses through DC-SIGN	95,130
Fcγ receptors		
	Ligation of FcγRI and FcγRIII on DCs and macrophages inhibits TLR-mediated IL-12 production and programs the DCs to induce T _H 2 responses	98,99
Complement receptors		
C5a, CR3	C5a and CR3 triggering negatively regulates TLR-mediated IL-12 production and biases toward T _H 2 responses	101,102
Protease-activated receptors		
PAR-2	PAR-2 mediates induction of the T _H 2-inducing cytokine TSLP in response to the fungus <i>A. alternata</i> ; protease kallikrein-5 induces atopic dermatitis-like lesions, through PAR-2-mediated induction of TSLP	104,105

expressing CD103 can specifically induce Foxp3⁺ T_{reg} cell from naive CD4⁺ T cells *in vitro* in a retinoic acid-dependent fashion^{60,61}. In addition, lamina propria macrophages are hyporesponsive to various inflammatory stimuli⁶², spontaneously secrete IL-10 and can efficiently promote Foxp3⁺ T_{reg} cell conversion *in vitro*⁶². IL-10 production by these lamina propria macrophages is responsible for maintaining Foxp3 expression in T_{reg} cells during intestinal inflammation⁶³.

Like the intestine, the lung is also constantly exposed to various microbes and allergens. Emerging studies show that, like intestinal DCs, lung DCs also play important regulatory roles in response to inhaled inert antigens. As in the intestine, lung CD103⁺ DCs promote the induction of T_{reg} cells⁶⁴, and lung CD103⁻ DCs represent the main producers of proinflammatory cytokines in response to airborne allergens or TLR ligands. In addition to conventional DCs, *in vitro* and *in vivo* studies show that lung plasmacytoid DCs also promote T_{reg} cell induction⁶⁵. In the skin, in contrast to the intestine and lung, CD103⁻CD11b⁺ migratory dermal DCs are much more potent in inducing Foxp3⁺ T_{reg} cells than are CD103⁺CD11b⁺ DCs⁶⁴.

Hierarchy level –1: innate receptors

DCs can sense pathogens and allergens directly by means of receptors of the innate immune system, such as TLRs, C-type lectin-like receptors (CLRs), RIG-I-like receptors (RLRs) and Nod-like receptors (NLRs)⁶⁶. Whereas there is a considerable understanding of how microbial stimuli signal through such receptors to induce T_H1 responses, our understanding of the receptors that induce T_H2 or tolerogenic responses is still fragmentary. Helminths, bacteria, viruses and allergens are all capable of inducing T_H2 responses⁶⁷. As might be expected, the immune system seems to have evolved a broad range of receptors to sense these diverse stimuli (Table 3).

TLRs are expressed on surface membrane or in endosomal compartments⁶⁶. TLRs on the surface membrane recognize microbial stimuli such as LPS (TLR4), lipoteichoic acids of Gram-positive bacteria and bacterial lipoproteins (TLR1-TLR2 and TLR2-TLR6 dimers), and flagellin (TLR5), whereas endosomal TLRs mainly detect microbial nucleic acids, such as double-stranded RNA (TLR3), single-stranded RNA (TLR7) and CpG DNA (TLR9). Signaling through most TLRs induces T_H1 responses. For example, LPS, CpG DNA, poly(I:C) and TLR7 ligands induce IL-12p70 and IFN-α production in DCs and stimulate T_H1 responses⁶⁶. Many TLR2 ligands also induce weak IL-12p70 production, and *Myd88*^{-/-} mice seem to have a selective

defect in T_H1 responses⁶⁶, suggesting that MyD88-dependent TLRs preferentially mediate T_H1 responses and not T_H2 responses. However certain TLR2 ligands can also induce T_H2 responses^{14,56,68–74}. Signaling through TLR2 can also result in tolerogenic responses^{75–81}. Stimulation of splenic DCs with specific TLR2-TLR6 ligands such as the yeast zymosan^{75–77} or *Y. pestis* virulence factor LcrV induces T_{reg} cells⁵⁸. Consistent with this, TLR2 ligands on staphylococcal cell walls downregulate superantigen-induced T cell activation and prevent toxic shock syndrome, through the induction of IL-10 (ref. 82).

In addition to the anti-inflammatory effects of TLR2, low doses of LPS have also been shown to induce T_H2 cells in response to intranasal immunization with protein antigens, by means of a TLR4- and MyD88-dependent mechanism⁸³. Furthermore, extracts of house dust mite allergens (HDM extracts, which are known to contain LPS) signal through TLR4 on airway structural cells to produce cytokines such as TSLP, granulocyte monocyte colony stimulating factor (GM-CSF), IL-25 and IL-33, which condition DCs to promote T_H2 response and airway inflammation⁸⁴. Consistent with this, the main HDM allergen Der p 2 is structurally and functionally homologous to MD-2 (the LPS-binding component of the TLR4 complex) and directly interacts with TLR4 to facilitate TLR4 signaling T_H2-mediated allergic inflammation⁸⁵. Interestingly, the cysteine protease papain induces T_H2 responses *in vivo*, through a mechanism dependent on TLR4-TRIF signaling but independent of MyD88 (ref. 34).

NLRs constitute a family of cytosolic proteins capable of detecting pathogens in the cytoplasm. NLRs consist of a central nucleotide-binding oligomerization domain (Nod), a C-terminal leucine-rich domain, and an N-terminal effector domain. NLRs include Nod1 and Nod2, which can sense peptidoglycans or peptides derived from their degradation, and the ICE protease-activating factor (IPAF), which can sense intracellular bacteria or bacterial products such as *Salmonella* flagellin⁸⁶. Immunization of mice with ligands specific for Nod1 or Nod2 induces predominantly T_H2 responses. However, in conjunction with TLR stimulation, Nod1 and Nod2 are required for the induction of T_H1, T_H2 and T_H17 responses^{87,88}. The cellular and molecular mechanisms that mediate the preferential T_H2 response through Nod1 or Nod2 signaling remain to be determined. Furthermore, it was recently demonstrated that alum, a classic T_H2 adjuvant, signals through the NALP3 inflammasome^{89–91}. Thus, DCs or macrophages stimulated *in vitro* with alum plus LPS induce IL-1β and IL-18 in a manner dependent on caspase-1 and NALP3 (refs. 89–91). Despite

the convincing *in vitro* studies, the question of whether NALP3 is required for the adjuvanticity of alum remains controversial, with some studies demonstrating abrogation of antibody responses in *Nalp3*^{-/-} mice^{89,91} and other studies showing partial or no effects⁹⁰. However, the mechanisms by which alum induces T_H2 responses are poorly understood.

CLRs belong to a large superfamily of transmembrane and soluble proteins that sense carbohydrate components of several pathogens, as well as self-glycoproteins. Like TLRs, recent studies have shown that CLRs can activate various signaling pathways that can induce DCs to stimulate T_H1, T_H2 or T_H17 cell responses⁹². For example, dectin-1- and dectin-2-mediated signaling programs DCs to produce IL-6 and IL-23 and induce T_H17 cell responses^{93,94}. DC-SIGN (DC-specific intercellular adhesion molecule-3-grabbing nonintegrin) is a receptor with a broad pathogen recognition specificity as a result of its affinity for mannose and fucose carbohydrates. Depending on the type of pathogen, DC-SIGN can contribute to either T_H1, T_H2 or T_{reg} cell responses. For example, mycobacteria target DC-SIGN to suppress DC function⁹⁵, and the LPS Lewis antigen (Le) of *Helicobacter pylori* induces T_H2-biased responses through a mechanism dependent on DC-SIGN; in contrast, Le⁻ variants of *H. pylori* escape binding to DC-SIGN and induce a T_H1 response⁹⁵. Allergens also signal through DC-SIGN to induce T_H2 responses. Thus, the main glycoprotein allergen from peanuts (*Arachis hypogaea*), Ara h 1, is a ligand of DC-SIGN and acts as a T_H2 adjuvant *in vitro*²².

Antigen-antibody complexes can regulate innate and adaptive immune responses through interaction with Fc receptors, which bind to the Fc region of antibodies⁹⁶. Ligation of Fc receptors that bind IgG antibodies (FcγRs) on macrophages and DCs inhibits the induction of IL-12 by TLRs and enhances that of IL-10, and programs these cells to induce a T_H2-biased response^{97,98}. FcγRs can be either activating or inhibitory: in their intracellular domains, FcγRI (CD64) and FcγRIII (CD16) possess immunoreceptor tyrosine-based activation motifs (ITAMs), whereas FcγRIIb possesses immunoreceptor tyrosine-based inhibitory motifs (ITIMs)⁹⁶. The activating FcγR receptors, FcγRI and FcγRIII, signal through a common signaling partner, FcRγ (FcεRIγ), which contains an ITAM motif⁹⁶. FcγRIIb is the only member of the inhibitory Fcγ receptor family in mice, and does not associate with FcRγ. Interestingly, FcγRIII ligation on DCs inhibits TLR4-mediated IL-12 induction by the DCs but enhances IL-10 induction, thus programming the DCs to induce T_H2-biased responses and enhance airway inflammation⁹⁹.

Complement activation is one of the earliest innate responses and is critical to host defense as well as to adaptive immunity. Activation of complement receptor 3 (CR3)¹⁰⁰ and CD46 (ref. 101) by C3 cleavage products inhibits TLR-induced IL-12 production in monocytes. Furthermore, complement-derived C5a anaphylatoxin inhibits TLR4- and CD40-induced IL-12, IL-23 and IL-27 production in macrophages by extracellular signal-regulated kinase (Erk)- and phosphatidylinositol-3-OH kinase-dependent pathways, resulting in diminished T_H1 responses¹⁰².

A key feature of several T_H2-inducing stimuli, including allergens and parasites, is that they possess cysteine or serine protease activities¹⁰³. This suggests that protease activity might be key in T_H2 responses induced by such allergens and parasites. Indeed, when these proteases are administered *in vivo*, they produce T_H2 responses¹⁰³. Thus, the protease activities of house dust mite, *Aspergillus*, ragweed and papain are essential for the induction of T_H2 responses. However, the cellular and molecular mechanisms by which proteases are sensed by the immune system, and how they induce T_H2 responses, are not understood. Although protease-activated receptors (PARs) are

activated by serine proteases, the ability of PARs to recognize cysteine protease activity and mediate T_H2 responses is poorly understood. Recently, PAR-2 was shown to mediate, in part, the induction of TSLP from airway epithelial cells *in vitro* in response to the protease activity of the common environmental fungus *Alternaria alternata*, as well as in response to the cysteine protease papain¹⁰⁴. Moreover, the serine protease kallikrein-5 induces atopic dermatitis-like lesions through PAR-2-mediated induction of TSLP in Netherton syndrome¹⁰⁵. Netherton syndrome is a severe skin disease with persistent atopic manifestations, caused by mutations in the gene encoding serine protease inhibitor Kazal-type-5 (SPINK5, also known as LEKTI)¹⁰⁵. This protease inhibitor mutation results in unregulated kallikrein-5 activation of PAR-2, with the induction of the pro-T_H2 mediators TSLP, TARC and MDC¹⁰⁵.

Hierarchy level –2: signaling networks

Certain TLR2 ligands and SEA induce an enhanced duration and magnitude of Erk signaling in DCs, compared to that induced by other TLR ligands^{69,70}. Interestingly, DCs from *Erk1*^{-/-} mice, or human DCs treated with a synthetic inhibitor of MEK1 and MEK2 (upstream activators of Erk1 and Erk2), produce enhanced amounts of IL-12p70 and diminished amounts of IL-10 in response to TLR stimulation^{69,70}, consistent with previous reports that Erk suppresses the induction of IL-12 and enhances IL-10 induction¹⁰⁶. Sustained duration and magnitude of Erk signaling results in phosphorylation and stabilization of the early growth transcription factor c-Fos in fibroblasts. Consistent with this, phosphorylated c-Fos expression is enhanced in DCs stimulated by TLR2 ligands and SEA, relative to that in DCs stimulated with *E. coli* LPS or flagellin^{69,70}. Furthermore, DCs from *Fos*^{-/-} mice, or human DCs in which c-Fos is knocked down with short interfering RNA, produce more IL-12p70 in response to TLR2 stimulation^{69,70}. Consistent with this, bacterial teichoic acids can suppress IL-12 induction by certain strains of *Lactobacillus*, and enhance IL-10 production, by means of TLR2-dependent Erk signaling¹⁰⁷. In addition to TLR2 ligands, a diverse range of stimuli, such as cyclic AMP¹⁰⁸ and the complement proteins C5a¹⁰² and iC3b¹⁰⁹, cigarette smoke-induced oxidative stress¹¹⁰, and signaling through DC-SIGN¹¹¹, FcγR¹¹², the human osteoclast-associated receptor (OSCAR, an FcγR-associated receptor¹¹³) and cannabinoid CB2 receptor¹¹⁴, can negatively regulate IL-12 production and, in some cases, promote IL-10 production, through a mechanism dependent on Erk signaling. In at least the case of cAMP, this was shown to be dependent on c-Fos¹⁰⁸ (Fig. 2a).

Further studies have established a key role for mitogen-activated protein-3 kinase (also known as Tpl2) in TLR-mediated activation of Erk in macrophages, DCs and B cells^{115,116}. Furthermore, abrogation of Erk signaling in *Tpl2*^{-/-} macrophages reduces c-Fos expression and transcriptional activity¹¹⁶. Interestingly, Tpl2 amounts are low in *Nfkb1*^{-/-} mice; however, rescue of TLR-dependent Erk activation in *Nfkb1*^{-/-} in bone marrow-derived macrophages only partially restores IL-10 production, suggesting both Erk-independent and Erk-dependent mechanisms of IL-10 production¹¹⁵. Collectively, these findings indicate that the Erk-Fos signaling pathway is an important regulator of IL-12 production in DCs and macrophages.

A second signaling pathway that programs DCs to induce T_H2 responses is one that involves TSLP, which stimulates NF-κB (predominantly the p50 subunit-containing form) in DCs to induce OX40L, which facilitates T_H2 differentiation (Fig. 2b). TSLP signaling also induces the activation of STAT6, which programs DCs to secrete chemokines necessary for the recruitment of T_H2 cells. In addition, TSLP signaling limits the activation of STAT4 and interferon

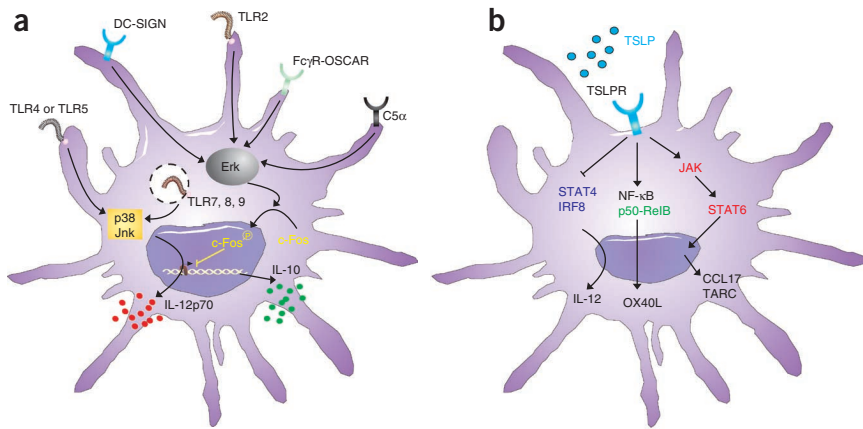


Figure 2 Signaling pathways that inhibit IL-12 production and program DCs to induce T_H2 responses. (a) Signaling through TLRs 4, 5, 7, 8 and 9 induces robust activation of the MAP kinases p38 and Jnk1/2, which leads to the induction of IL-12 and T_H1 responses. In contrast, signaling through TLR2, DC-SIGN, OSCAR (an FcγR-associated receptor) and C5a induces enhanced and sustained activation of Erk1 and Erk2, which results in the stabilization of the transcription factor c-Fos that suppresses IL-12 and enhances IL-10, thus favoring a T_H2 bias. (b) TSLP receptor (TSLPR) signaling pathways program DCs to induce potent T_H2 responses. Signaling through TSLPR in DCs leads to activation of the transcription factors NF-κB and STAT6, which are critical for promoting T_H2 responses. Activation of NF-κB (predominantly p50) induces expression of OX40L, which stimulates T_H2 differentiation. Furthermore, activation of STAT6 triggers DCs to secrete chemokines necessary for the recruitment of T_H2 cells. In contrast, TSLPR signaling inhibits activation of STAT4 and IRF8, critical for the production of the T_H1-polarizing cytokine IL-12.

regulatory factor-8 (IRF-8), essential factors for the production of the T_H1-polarizing cytokine IL-12. By contrast, TLR ligands and CD40 ligand do not activate STAT6 in myeloid DCs, but instead increase the abundance of STAT4 and IRF-8 to induce T_H1 responses through the production of IL-12 (ref. 117).

Third, our recent findings demonstrate a distinct program of DC activation by papain. DCs cultured with papain do not produce any pro- or anti-inflammatory cytokines or chemokines, among more than 20 tested. Instead, there is an induction of genes encoding several reactive oxygen species (ROS)-related molecules, including heme oxygenase (decycling)-1 (HO-1) and NCF4(P40phox)³⁴. HO-1 is recognized as a sensitive and reliable indicator of cellular oxidative stress, and NCF4(p40phox) is a subunit of NADPH complex¹¹⁸. The production of ROS by DCs was confirmed by staining

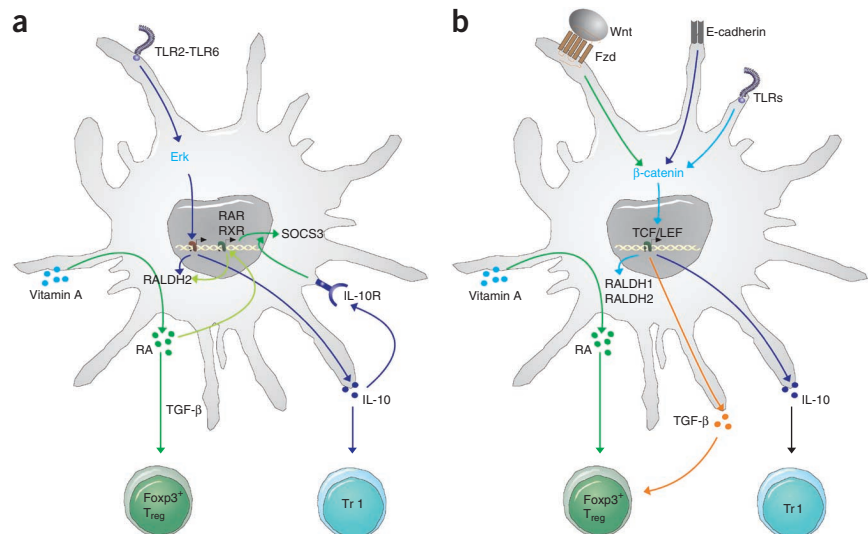
with the 5-(and-6)-carboxy-2',7'-dichloro-dihydrofluorescein diacetate (DCF) dye³⁴. Presence of ROS is an endogenous signal for induction of inflammation, acute lung injury and atherosclerosis^{119,120}. Although the role of ROS in asthma is well documented¹²¹, involvement of ROS in induction of T_H2 responses to cysteine proteases (helminth products and allergens) is as yet unknown. It has been reported that production of ROS by macrophages diminishes a T_H1 response¹²². Consistent with this, inhibition of ROS in papain-treated DCs results in enhanced IL-12 and CD70 production and enhanced T_H1 responses. Furthermore, targeting synthetic inhibitors of ROS to DCs *in vivo* using nanoparticles impairs papain-induced T_H2 responses. Thus, papain induction of ROS in DCs programs them to suppress T_H1 and promote T_H2 responses.

In the case of tolerogenic responses, yeast zymosan, which signals through dectin-1 and the dimer of TLR2 and TLR6, induces DCs to express IL-10 and the retinoic acid-metabolizing enzyme retinaldehyde dehydrogenase type 2 (RALDH2), by means of an Erk-dependent pathway^{75,76}. Retinoic acid

induces SOCS3 expression in DCs in an autocrine manner, which suppresses activation of p38 MAPK and proinflammatory cytokines⁷⁶ (Fig. 3a). Consistent with this, TLR2 signaling induces development of T_{reg} cells and suppresses IL-23-, T_H1- and T_H17-mediated autoimmune responses *in vivo*. Similarly, activation of TLR2 by LcrV or *Lactobacillus* induces Erk-dependent suppression of IL-12 and induction of IL-10 (refs. 58,107). Thus, TLR2-Erk dependent induction of IL-10 and RALDH2 enzymes programs tolerogenic DCs.

Disruption of E-cadherin-E-cadherin interactions between DCs promotes 'alternative' maturation of immature DCs, with impaired immune stimulatory capacity⁴⁹. However, the mechanism by which β-catenin signaling programs DCs to a tolerogenic state is not known. Our recent work shows that, unlike in splenic DCs, β-catenin signaling is constitutively active in intestinal DCs and macrophages¹²³.

Figure 3 Signaling pathways that program DCs to induce tolerogenic responses. (a) TLR-Erk-mediated induction of vitamin A metabolizing enzymes and IL-10. Triggering DCs through TLR2-TLR6 leads to Erk activation, which mediates induction of retinaldehyde dehydrogenase-2 (RALDH2). This results in the conversion of retinal to retinoic acid (RA), which then exerts an autocrine effect on DCs by means of the receptors RAR or RXR to induce SOCS3, which suppresses activation of p38 MAPK and proinflammatory cytokines. Further, IL-10 and RA program DCs to induce T_{reg} cells and limit inflammatory responses. (b) β-catenin signaling pathways in programming regulatory DCs. Activation of β-catenin pathway by E-cadherin, TLRs or Wnt ligands in DCs promotes induction of anti-inflammatory factors such as vitamin A, IL-10 and TGF-β that are critical for promoting T regulatory response and limiting inflammatory responses. Fzd, the Wnt receptor Frizzled.



DC-specific deletion of the gene encoding β -catenin in mice leads to markedly reduced frequencies of Foxp3⁺ regulatory T cells, and enhanced frequencies of T_H1 and T_H17 cells, in the intestine but not in the spleen¹²³. Consistent with this, intestinal DCs deficient in β -catenin show reduced expression of RALDH enzymes and IL-10 production and promote inflammatory T cells responses in the steady state¹²³. Collectively, these data illustrate the emerging role of β -catenin signaling in programming DCs to promote intestinal homeostasis and tolerance (Fig. 3b).

Hierarchy level +1: cell-cell cooperation

Several cell types interact to shape T_H2 and tolerogenic responses. For example, basophils produce IL-4 and promote T_H2 responses^{35–43}. Recent studies show that basophils can present antigens to CD4⁺ T cells during T_H2 responses^{41–43}. However, our recent work demonstrates that DCs are far more efficient than basophils at presenting protein antigens and inducing proliferation of naive CD4⁺ T cells³⁵. When lymph node DCs and basophils are isolated after immunization of mice with ovalbumin plus papain, and cultured with naive ovalbumin-specific CD4⁺ T cells, coculture of 5×10^3 to 10^4 DCs with 10^5 T cells is sufficient to induce robust T cell proliferation (in the absence of exogenous antigen), but is unable to induce T_H2 polarization³⁴. In contrast, coculture of 5×10^3 to 10^4 basophils with 10^5 T cells does not induce significant T cell proliferation, but does result in IL-4 secretion *in vitro*. Notably, coculture of DCs, basophils and T cells results in robust T cell proliferation and T_H2 induction³⁴. Consistent with this, deletion of DCs *in vivo* using the CD11-DTR mice, before immunization with papain plus ovalbumin, results in impaired ovalbumin-specific T cell proliferation and T_H2 responses. In contrast, deletion of basophils results in impaired T_H2 induction but normal proliferation. Thus, induction of T_H2 responses to papain is dependent on both DCs and basophils³⁴.

Further evidence for intercellular cooperation comes from three research groups who have identified new populations of cells involved in T_H2 responses^{124–126}. First, a subset of lymphoid cells in fat-associated lymphoid tissues (FALC) has been identified in both mice and humans¹²⁴. These cells are lineage marker-negative (Lin⁻) but Sca-1⁺c-Kit⁺IL-7R⁺IL-33R⁺. Such cells proliferate in response to IL-2 and produce copious IL-5, IL-6 and IL-13. Consistent with the effects of IL-5 and IL-6 on B cell differentiation, these cells support the self-renewal of B1 B cells and enhance IgA production. After helminth infection and in response to IL-33, FALC Lin⁻c-Kit⁺Sca-1⁺ cells produce abundant IL-13, which leads to goblet cell hyperplasia—a critical step for helminth expulsion. Second, a new innate effector leukocyte ('nuocyte')¹²⁶ has been identified that expands *in vivo* in response to the T_H2-inducing cytokines IL-25 and IL-33, and is the chief producer of IL-13 during infection with the helminth *N. brasiliensis*. Nuocytes express ICOS, ST2, IL-17RB and IL-7R α , although only a subset of them express c-Kit. In the absence of IL-25 and IL-33 signaling, nuocytes fail to expand, resulting in impaired worm expulsion¹²⁶. Finally, IL-25 promotes the accumulation in the gut-associated lymphoid tissue of a Lin⁻Sca-1⁺c-Kit^{int} multipotent progenitor population (MPP type2) that has the capacity to give rise to monocytes or macrophages and to granulocytes. Transfer of MPP type2 cells rescues T_H2 responses and immunity to *T. muris* in *Il25*^{-/-} mice. The potential relationships between these cells, and their relative contributions to T_H2 induction in a variety of settings, needs to be studied. Finally, in the case of tolerogenic responses, there are many examples of cell-cell cooperation. Thus, myeloid-derived suppressor cells are a heterogeneous mix of cells that expand during cancer, inflammation and infection

and potently suppress T cell responses. These cells may augment the immunosuppressive effects of tolerogenic DCs¹²⁷.

Hierarchy level +2: tissue microenvironments

This topic is discussed extensively in another review in this focus issue¹²⁸, and will thus be discussed only briefly. For example, intestinal epithelial cells secrete IL-25 and TSLP and condition intestinal DCs to express RALDH enzymes, which programs them to induce T_{reg} cells. In addition to epithelial cells, stromal cells are also critical in conditioning DCs to regulatory or tolerogenic states in various organs, such as the gut-associated lymphoid tissue and spleen¹²⁸. Furthermore, allergens trigger the production of TSLP, GM-CSF and IL-33 by airway epithelial cells, which induce DCs to migrate to the lymph nodes and prime T_H2 responses¹²⁸.

Top-down, bottom-up or middle-out?

The temporal and spatial complexity of the events that lead to T_H2 or tolerogenic responses can be simplified by considering different levels of abstraction, or 'hierarchies of organization'. Many important insights have emerged from studies that focus on a single level of the hierarchy (for example, signaling pathways in DCs, or cellular interactions in the lymph nodes), but such insights do not offer a global picture. Therefore, future research should seek an integrated understanding of the immune response at several levels: signaling within DCs, nature of the innate receptors, cell-cell interactions and the influence of microenvironments. A key question is whether investigations should occur in a 'top-down' (for example, hierarchy levels +2 to -2), or 'bottom-up' direction. In fact, given their central role in orchestrating the response, it may be most sensible to consider DCs as a node from which investigations could occur in a 'middle-out' manner. It is clear that a unified theory of T_H2 or T_{reg} responses will only be possible by integrating information obtained at each of these hierarchical levels. Such understanding will guide the rational design of therapeutics and vaccines that can reprogram the innate immune systems toward tolerance in active T_H2- or T_H1-mediated disease.

ACKNOWLEDGMENTS

We thank H. Nakaya for assistance with the figures. We gratefully acknowledge the generous support of the US National Institutes of Health and the Bill and Melinda Gates Foundation in our work. We regret not being able to cite many relevant references because of space limitations.

COMPETING FINANCIAL INTERESTS

The authors declare no competing financial interests.

Published online at <http://www.nature.com/natureimmunology/>.

Reprints and permissions information is available online at <http://npg.nature.com/reprintsandpermissions/>.

- Mosmann, T.R., Cherwinski, H., Bond, M.W., Giedlin, M.A. & Coffman, R.L. Two types of murine helper T cell clone. I. Definition according to profiles of lymphokine activities and secreted proteins. *J. Immunol.* **136**, 2348–2357 (1986).
- Zhu, J., Yamane, H. & Paul, W.E. Differentiation of effector CD4 T cell populations. *Annu. Rev. Immunol.* **28**, 445–489 (2010).
- Murphy, C.A. *et al.* Divergent pro- and antiinflammatory roles for IL-23 and IL-12 in joint autoimmune inflammation. *J. Exp. Med.* **198**, 1951–1957 (2003).
- Chen, W. *et al.* Conversion of peripheral CD4+CD25- naive T cells to CD4+CD25+ regulatory T cells by TGF- β induction of transcription factor Foxp3. *J. Exp. Med.* **198**, 1875–1886 (2003).
- Grainger, J.R., Hall, J.A., Bouladoux, N., Oldenhove, G. & Belkaid, Y. Microbe-dendritic cell dialog controls regulatory T-cell fate. *Immunol. Rev.* **234**, 305–316 (2010).
- Steinman, R.M. & Banchereau, J. Taking dendritic cells into medicine. *Nature* **449**, 419–426 (2007).
- Pulendran, B. *et al.* Distinct dendritic cell subsets differentially regulate the class of immune response *in vivo*. *Proc. Natl. Acad. Sci. USA* **96**, 1036–1041 (1999).

8. Maldonado-Lopez, R. *et al.* CD8 α^+ and CD8 α^- subclasses of dendritic cells direct the development of distinct T helper cells *in vivo*. *J. Exp. Med.* **189**, 587–592 (1999).
9. Soares, H. *et al.* A subset of dendritic cells induces CD4 $^+$ T cells to produce IFN- γ by an IL-12-independent but CD70-dependent mechanism *in vivo*. *J. Exp. Med.* **204**, 1095–1106 (2007).
10. Stumbles, P.A. *et al.* Resting respiratory tract dendritic cells preferentially stimulate T helper cell type 2 (Th2) responses and require obligatory cytokine signals for induction of Th1 immunity. *J. Exp. Med.* **188**, 2019–2031 (1998).
11. Lambrecht, B.N. *et al.* Myeloid dendritic cells induce Th2 responses to inhaled antigen, leading to eosinophilic airway inflammation. *J. Clin. Invest.* **106**, 551–559 (2000).
12. Rissoan, M.C. *et al.* Reciprocal control of T helper cell and dendritic cell differentiation. *Science* **283**, 1183–1186 (1999).
13. Klechevsky, E. *et al.* Functional specializations of human epidermal Langerhans cells and CD14 $^+$ dermal dendritic cells. *Immunity* **29**, 497–510 (2008).
14. Pulendran, B. *et al.* Lipopolysaccharides from distinct pathogens induce different classes of immune responses *in vivo*. *J. Immunol.* **167**, 5067–5076 (2001).
15. d'Ostiani, C.F. *et al.* Dendritic cells discriminate between yeasts and hyphae of the fungus *Candida albicans*. Implications for initiation of T helper cell immunity *in vitro* and *in vivo*. *J. Exp. Med.* **191**, 1661–1674 (2000).
16. Lamhamedi-Cherradi, S.E. *et al.* Fungal proteases induce Th2 polarization through limited dendritic cell maturation and reduced production of IL-12. *J. Immunol.* **180**, 6000–6009 (2008).
17. MacDonald, A.S., Straw, A.D., Bauman, B. & Pearce, E.J. CD8- dendritic cell activation status plays an integral role in influencing Th2 response development. *J. Immunol.* **167**, 1982–1988 (2001).
18. Everts, B. *et al.* Omega-1, a glycoprotein secreted by *Schistosoma mansoni* eggs, drives Th2 responses. *J. Exp. Med.* **206**, 1673–1680 (2009).
19. Steinfeldt, S. *et al.* The major component in schistosome eggs responsible for conditioning dendritic cells for Th2 polarization is a T2 ribonuclease (omega-1). *J. Exp. Med.* **206**, 1681–1690 (2009).
20. Whelan, M. *et al.* A filarial nematode-secreted product signals dendritic cells to acquire a phenotype that drives development of Th2 cells. *J. Immunol.* **164**, 6453–6460 (2000).
21. Braun, M.C., He, J., Wu, C.Y. & Kelsall, B.L. Cholera toxin suppresses interleukin (IL)-12 production and IL-12 receptor beta1 and beta2 chain expression. *J. Exp. Med.* **189**, 541–552 (1999).
22. Shreffler, W.G. *et al.* The major glycoprotein allergen from *Arachis hypogaea*, Ara h 1, is a ligand of dendritic cell-specific ICAM-grabbing nonintegrin and acts as a Th2 adjuvant *in vitro*. *J. Immunol.* **177**, 3677–3685 (2006).
23. Kobayashi, T. *et al.* Asthma-related environmental fungus, *Alternaria*, activates dendritic cells and produces potent Th2 adjuvant activity. *J. Immunol.* **182**, 2502–2510 (2009).
24. Ghaemmaghami, A.M., Gough, L., Sewell, H.F. & Shakib, F. The proteolytic activity of the major dust mite allergen Der p 1 conditions dendritic cells to produce less interleukin-12: allergen-induced Th2 bias determined at the dendritic cell level. *Clin. Exp. Allergy* **32**, 1468–1475 (2002).
25. Traidl-Hoffmann, C. *et al.* Pollen-associated phytoestrogens inhibit dendritic cell interleukin-12 production and augment T helper type 2 cell polarization. *J. Exp. Med.* **201**, 627–636 (2005).
26. Bozza, S. *et al.* Immune sensing of *Aspergillus fumigatus* proteins, glycolipids, and polysaccharides and the impact on Th immunity and vaccination. *J. Immunol.* **183**, 2407–2414 (2009).
27. Kalinski, P., Schuitemaker, J.H., Hilkens, C.M. & Kapsenberg, M.L. Prostaglandin E2 induces the final maturation of IL-12-deficient CD1a $^+$ CD83 $^+$ dendritic cells: the levels of IL-12 are determined during the final dendritic cell maturation and are resistant to further modulation. *J. Immunol.* **161**, 2804–2809 (1998).
28. Soumelis, V. *et al.* Human epithelial cells trigger dendritic cell mediated allergic inflammation by producing TSLP. *Nat. Immunol.* **3**, 673–680 (2002).
29. Ito, T. *et al.* TSLP-activated dendritic cells induce an inflammatory T helper type 2 cell response through OX40 ligand. *J. Exp. Med.* **202**, 1213–1223 (2005).
30. Zhou, B. *et al.* Thymic stromal lymphopoietin as a key initiator of allergic airway inflammation in mice. *Nat. Immunol.* **6**, 1047–1053 (2005).
31. Caron, G. *et al.* Histamine polarizes human dendritic cells into Th2 cell-promoting effector dendritic cells. *J. Immunol.* **167**, 3682–3686 (2001).
32. van Rijjt, L.S. *et al.* *In vivo* depletion of lung CD11c $^+$ dendritic cells during allergen challenge abrogates the characteristic features of asthma. *J. Exp. Med.* **201**, 981–991 (2005).
33. Kool, M. *et al.* Alum adjuvant boosts adaptive immunity by inducing uric acid and activating inflammatory dendritic cells. *J. Exp. Med.* **205**, 869–882 (2008).
34. Tang, H. *et al.* The T helper type 2 response to cysteine proteases requires dendritic cell-basophil cooperation via ROS-mediated signaling. *Nat. Immunol.* **11**, 608–617 (2010).
35. Urban, J.F. Jr. *et al.* The importance of Th2 cytokines in protective immunity to nematodes. *Immunol. Rev.* **127**, 205–220 (1992).
36. Khodoun, M.V., Orekhova, T., Potter, C., Morris, S. & Finkelman, F.D. Basophils initiate IL-4 production during a memory T-dependent response. *J. Exp. Med.* **200**, 857–870 (2004).
37. Denzel, A. *et al.* Basophils enhance immunological memory responses. *Nat. Immunol.* **9**, 733–742 (2008).
38. Min, B. & Paul, W.E. Basophils and type 2 immunity. *Curr. Opin. Hematol.* **15**, 59–63 (2008).
39. Galli, S.J., Nاکae, S. & Tsai, M. Mast cells in the development of adaptive immune responses. *Nat. Immunol.* **6**, 135–142 (2005).
40. Kambayashi, T. *et al.* Indirect involvement of allergen-captured mast cells in antigen presentation. *Blood* **111**, 1489–1496 (2008).
41. Yoshimoto, T. *et al.* Basophils contribute to T_H2-IgE responses *in vivo* via IL-4 production and presentation of peptide-MHC class II complexes to CD4 $^+$ T cells. *Nat. Immunol.* **10**, 706–712 (2009).
42. Sokol, C.L. *et al.* Basophils function as antigen-presenting cells for an allergen-induced T helper type 2 response. *Nat. Immunol.* **10**, 713–720 (2009).
43. Perrigoue, J.G. *et al.* MHC class II-dependent basophil-CD4 $^+$ T cell interactions promote T_H2 cytokine-dependent immunity. *Nat. Immunol.* **10**, 697–705 (2009).
44. Yoshimoto, T., Bendelac, A., Watson, C., Hu-Li, J. & Paul, W.E. Role of NK1.1 $^+$ T cells in a Th2 response and in immunoglobulin E production. *Science* **270**, 1845–1847 (1995).
45. Brown, D.R. *et al.* Beta 2-microglobulin-dependent NK1.1 $^+$ T cells are not essential for T helper cell 2 immune responses. *J. Exp. Med.* **184**, 1295–1304 (1996).
46. Amsen, D. *et al.* Instruction of distinct CD4 T helper cell fates by different notch ligands on antigen-presenting cells. *Cell* **117**, 515–526 (2004).
47. Brocker, T., Riedinger, M. & Karjalainen, K. Targeted expression of major histocompatibility complex (MHC) class II molecules demonstrates that dendritic cells can induce negative but not positive selection of thymocytes *in vivo*. *J. Exp. Med.* **185**, 541–550 (1997).
48. Steinman, R.M. & Nussenzweig, M.C. Avoiding horror autotoxicus: the importance of dendritic cells in peripheral T cell tolerance. *Proc. Natl. Acad. Sci. USA* **99**, 351–358 (2002).
49. Jiang, A. *et al.* Disruption of E-cadherin-mediated adhesion induces a functionally distinct pathway of dendritic cell maturation. *Immunity* **27**, 610–624 (2007).
50. Morelli, A.E. & Thomson, A.W. Tolerogenic dendritic cells and the quest for transplant tolerance. *Nat. Rev. Immunol.* **7**, 610–621 (2007).
51. Mellor, A.L. & Munn, D.H. IDO expression by dendritic cells: tolerance and tryptophan catabolism. *Nat. Rev. Immunol.* **4**, 762–774 (2004).
52. Steinman, R.M., Turley, S., Mellman, I. & Inaba, K. The induction of tolerance by dendritic cells that have captured apoptotic cells. *J. Exp. Med.* **191**, 411–416 (2000).
53. Belz, G.T. *et al.* The CD8 α^+ dendritic cell is responsible for inducing peripheral self-tolerance to tissue-associated antigens. *J. Exp. Med.* **196**, 1099–1104 (2002).
54. Bonifaz, L. *et al.* Efficient targeting of protein antigen to the dendritic cell receptor DEC-205 in the steady state leads to antigen presentation on major histocompatibility complex class I products and peripheral CD8 $^+$ T cell tolerance. *J. Exp. Med.* **196**, 1627–1638 (2002).
55. Bonifazi, P. *et al.* Balancing inflammation and tolerance *in vivo* through dendritic cells by the commensal *Candida albicans*. *Mucosal Immunol.* **2**, 362–374 (2009).
56. van der Kleij, D. *et al.* A novel host-parasite lipid cross-talk. Schistosomal lysophosphatidylserine activates toll-like receptor 2 and affects immune polarization. *J. Biol. Chem.* **277**, 48122–48129 (2002).
57. McGuirk, P., McCann, C. & Mills, K.H. Pathogen-specific T regulatory 1 cells induced in the respiratory tract by a bacterial molecule that stimulates interleukin 10 production by dendritic cells: a novel strategy for evasion of protective T helper type 1 responses by *Bordetella pertussis*. *J. Exp. Med.* **195**, 221–231 (2002).
58. Depaolo, R.W. *et al.* Toll-like receptor 6 drives differentiation of tolerogenic dendritic cells and contributes to LcrV-mediated plague pathogenesis. *Cell Host Microbe* **4**, 350–361 (2008).
59. Garrett, W.S., Gordon, J.I. & Glimcher, L.H. Homeostasis and inflammation in the intestine. *Cell* **140**, 859–870 (2010).
60. Coombes, J.L. *et al.* A functionally specialized population of mucosal CD103 $^+$ DCs induces Foxp3 $^+$ regulatory T cells via a TGF- β and retinoic acid-dependent mechanism. *J. Exp. Med.* **204**, 1757–1764 (2007).
61. Sun, C.M. *et al.* Small intestine lamina propria dendritic cells promote de novo generation of Foxp3 T reg cells via retinoic acid. *J. Exp. Med.* **204**, 1775–1785 (2007).
62. Denning, T.L., Wang, Y.C., Patel, S.R., Williams, I.R. & Pulendran, B. Lamina propria macrophages and dendritic cells differentially induce regulatory and interleukin 17-producing T cell responses. *Nat. Immunol.* **8**, 1086–1094 (2007).
63. Murai, M. *et al.* Interleukin 10 acts on regulatory T cells to maintain expression of the transcription factor Foxp3 and suppressive function in mice with colitis. *Nat. Immunol.* **10**, 1178–1184 (2009).
64. Guillemins, M. *et al.* Skin-draining lymph nodes contain dermis-derived CD103 $^-$ dendritic cells that constitutively produce retinoic acid and induce Foxp3 $^+$ regulatory T cells. *Blood* **115**, 1958–1968 (2010).
65. Grohmann, U. *et al.* Reverse signaling through GITR ligand enables dexamethasone to activate IDO in allergy. *Nat. Med.* **13**, 579–586 (2007).
66. Iwasaki, A. & Medzhitov, R. Regulation of adaptive immunity by the innate immune system. *Science* **327**, 291–295 (2010).
67. Maizels, R.M., Pearce, E.J., Artis, D., Yazdanbakhsh, M. & Wynn, T.A. Regulation of pathogenesis and immunity in helminth infections. *J. Exp. Med.* **206**, 2059–2066 (2009).

68. Kiura, K., Kataoka, H., Yasuda, M., Inoue, N. & Shibata, K. The diacylated lipopeptide FSL-1 induces TLR2-mediated Th2 responses. *FEMS Immunol. Med. Microbiol.* **48**, 44–55 (2006).
69. Dillon, S. *et al.* A Toll-like receptor 2 ligand stimulates Th2 responses in vivo, via induction of extracellular signal-regulated kinase mitogen-activated protein kinase and c-Fos in dendritic cells. *J. Immunol.* **172**, 4733–4743 (2004).
70. Agrawal, S. *et al.* Cutting edge: different Toll-like receptor agonists instruct dendritic cells to induce distinct Th responses via differential modulation of extracellular signal-regulated kinase-mitogen-activated protein kinase and c-Fos. *J. Immunol.* **171**, 4984–4989 (2003).
71. Redecke, V. *et al.* Cutting edge: activation of Toll-like receptor 2 induces a Th2 immune response and promotes experimental asthma. *J. Immunol.* **172**, 2739–2743 (2004).
72. van Riet, E. *et al.* Combined TLR2 and TLR4 ligation in the context of bacterial or helminth extracts in human monocyte derived dendritic cells: molecular correlates for Th1/Th2 polarization. *BMC Immunol.* **10**, 9 (2009).
73. Liu, T. *et al.* Staphylococcal enterotoxin B increases TIM4 expression in human dendritic cells that drives naive CD4 T cells to differentiate into Th2 cells. *Mol. Immunol.* **44**, 3580–3587 (2004).
74. Yang, D. *et al.* Eosinophil-derived neurotoxin acts as an alarmin to activate the TLR2-MyD88 signal pathway in dendritic cells and enhances Th2 immune responses. *J. Exp. Med.* **205**, 79–90 (2008).
75. Dillon, S. *et al.* Yeast zymosan, a stimulus for TLR2 and dectin-1, induces regulatory antigen-presenting cells and immunological tolerance. *J. Clin. Invest.* **116**, 916–928 (2006).
76. Manicassamy, S. *et al.* Toll-like receptor 2-dependent induction of vitamin A-metabolizing enzymes in dendritic cells promotes T regulatory responses and inhibits autoimmunity. *Nat. Med.* **15**, 401–409 (2009).
77. Karumuthi-Melethil, S., Perez, N., Li, R. & Vasu, C. Induction of innate immune response through TLR2 and dectin 1 prevents type 1 diabetes. *J. Immunol.* **181**, 8323–8334 (2008).
78. McKimmie, C.S. *et al.* A TLR2 ligand suppresses inflammation by modulation of chemokine receptors and redirection of leukocyte migration. *Blood* **113**, 4224–4231 (2009).
79. Abdollahi-Roodsaz, S. *et al.* Stimulation of TLR2 and TLR4 differentially skews the balance of T cells in a mouse model of arthritis. *J. Clin. Invest.* **118**, 205–216 (2008).
80. Loures, F.V., Pina, A., Felonato, M. & Calich, V.L. TLR2 is a negative regulator of Th17 cells and tissue pathology in a pulmonary model of fungal infection. *J. Immunol.* **183**, 1279–1290 (2009).
81. Nichols, J.R. *et al.* TLR2 deficiency leads to increased Th17 infiltrates in experimental brain abscesses. *J. Immunol.* **182**, 7119–7130 (2009).
82. Chau, T.A. *et al.* Toll-like receptor 2 ligands on the staphylococcal cell wall downregulate superantigen-induced T cell activation and prevent toxic shock syndrome. *Nat. Med.* **15**, 641–648 (2009).
83. Eisenbarth, S.C. *et al.* Lipopolysaccharide-enhanced, toll-like receptor 4-dependent T helper cell type 2 responses to inhaled antigen. *J. Exp. Med.* **196**, 1645–1651 (2002).
84. Hammad, H. *et al.* House dust mite allergen induces asthma via Toll-like receptor 4 triggering of airway structural cells. *Nat. Med.* **15**, 410–416 (2009).
85. Trompette, A. *et al.* Allergenicity resulting from functional mimicry of a Toll-like receptor complex protein. *Nature* **457**, 585–588 (2009).
86. Ting, J.P., Duncan, J.A. & Lei, Y. How the noninflammasome NLRs function in the innate immune system. *Science* **327**, 286–290 (2010).
87. Fritz, J.H. *et al.* Nod1-mediated innate immune recognition of peptidoglycan contributes to the onset of adaptive immunity. *Immunity* **26**, 445–459 (2007).
88. Magalhaes, J.G. *et al.* Nod2-dependent Th2 polarization of antigen-specific immunity. *J. Immunol.* **181**, 7925–7935 (2008).
89. Eisenbarth, S.C., Colegio, O.R., O'Connor, W., Sutterwala, F.S. & Flavell, R.A. Crucial role for the Nalp3 inflammasome in the immunostimulatory properties of aluminium adjuvants. *Nature* **453**, 1122–1126 (2008).
90. Kool, M. *et al.* Cutting edge: alum adjuvant stimulates inflammatory dendritic cells through activation of the NALP3 inflammasome. *J. Immunol.* **181**, 3755–3759 (2008).
91. Li, H., Willingham, S.B., Ting, J.P. & Re, F. Cutting edge: inflammasome activation by alum and alum's adjuvant effect are mediated by NLRP3. *J. Immunol.* **181**, 17–21 (2008).
92. Geijtenbeek, T.B. & Gringhuis, S.I. Signalling through C-type lectin receptors: shaping immune responses. *Nat. Rev. Immunol.* **9**, 465–479 (2009).
93. Rogers, N.C. *et al.* Syk-dependent cytokine induction by Dectin-1 reveals a novel pattern recognition pathway for C type lectins. *Immunity* **22**, 507–517 (2005).
94. LeibundGut-Landmann, S. *et al.* Syk- and CARD9-dependent coupling of innate immunity to the induction of T helper cells that produce interleukin 17. *Nat. Immunol.* **8**, 630–638 (2007).
95. Bergman, M.P. *et al.* *Helicobacter pylori* modulates the T helper cell 1/T helper cell 2 balance through phase-variable interaction between lipopolysaccharide and DC-SIGN. *J. Exp. Med.* **200**, 979–990 (2004).
96. Nimmerjahn, F. & Ravetch, J.V. Fcγ receptors as regulators of immune responses. *Nat. Rev. Immunol.* **8**, 34–47 (2008).
97. Anderson, C.F., Lucas, M., Gutierrez-Kobeh, L., Field, A.E. & Mosser, D.M. T cell biasing by activated dendritic cells. *J. Immunol.* **173**, 955–961 (2004).
98. Sutterwala, F.S., Noel, G.J., Salgame, P. & Mosser, D.M. Reversal of proinflammatory responses by ligating the macrophage Fcγ receptor type I. *J. Exp. Med.* **188**, 217–222 (1998).
99. Bandukwala, H.S. *et al.* Signaling through Fc gamma RIII is required for optimal T helper type (Th)2 responses and Th2-mediated airway inflammation. *J. Exp. Med.* **204**, 1875–1889 (2007).
100. Marth, T. & Kelsall, B.L. Regulation of interleukin-12 by complement receptor 3 signaling. *J. Exp. Med.* **185**, 1987–1995 (1997).
101. Karp, C.L. *et al.* Mechanism of suppression of cell-mediated immunity by measles virus. *Science* **273**, 228–231 (1996).
102. Hawlisch, H. *et al.* C5a negatively regulates toll-like receptor 4-induced immune responses. *Immunity* **22**, 415–426 (2005).
103. Chapman, M.D., Wunschmann, S. & Pomes, A. Proteases as Th2 adjuvants. *Curr. Allergy Asthma Rep.* **7**, 363–367 (2007).
104. Kouzaki, H., O'Grady, S.M., Lawrence, C.B. & Kita, H. Proteases induce production of thymic stromal lymphopoietin by airway epithelial cells through protease-activated receptor-2. *J. Immunol.* **183**, 1427–1434 (2009).
105. Briot, A. *et al.* Kallikrein 5 induces atopic dermatitis-like lesions through PAR2-mediated thymic stromal lymphopoietin expression in Netherton syndrome. *J. Exp. Med.* **206**, 1135–1147 (2009).
106. Yi, A.K. *et al.* Role of mitogen-activated protein kinases in CpG DNA-mediated IL-10 and IL-12 production: central role of extracellular signal-regulated kinase in the negative feedback loop of the CpG DNA-mediated Th1 response. *J. Immunol.* **168**, 4711–4720 (2002).
107. Kaji, R., Kiyoshima-Shibata, J., Nagaoka, M., Nanno, M. & Shida, K. Bacterial teichoic acids reverse predominant IL-12 production induced by certain lactobacillus strains into predominant IL-10 production via TLR2-dependent ERK activation in macrophages. *J. Immunol.* **184**, 3505–3513 (2010).
108. Koga, K. *et al.* Cyclic adenosine monophosphate suppresses the transcription of proinflammatory cytokines via the phosphorylated c-Fos protein. *Immunity* **30**, 372–383 (2009).
109. Luo, X. *et al.* Inhibition of monocyte-derived dendritic cell differentiation and interleukin-12 production by complement iC3b via a mitogen-activated protein kinase signalling pathway. *Exp. Dermatol.* **14**, 303–310 (2005).
110. Kroening, P.R. *et al.* Cigarette smoke-induced oxidative stress suppresses generation of dendritic cell IL-12 and IL-23 through ERK-dependent pathways. *J. Immunol.* **181**, 1536–1547 (2008).
111. Caparros, E. *et al.* DC-SIGN ligation on dendritic cells results in ERK and PI3K activation and modulates cytokine production. *Blood* **107**, 3950–3958 (2006).
112. Lucas, M., Zhang, X., Prasanna, V. & Mosser, D.M. ERK activation following macrophage FcγR ligation leads to chromatin modifications at the IL-10 locus. *J. Immunol.* **175**, 469–477 (2005).
113. Merck, E. *et al.* Fc receptor gamma-chain activation via hOSCAR induces survival and maturation of dendritic cells and modulates Toll-like receptor responses. *Blood* **105**, 3623–3632 (2005).
114. Correa, F., Mestre, L., Docagne, F. & Guaza, C. Activation of cannabinoid CB2 receptor negatively regulates IL-12p40 production in murine macrophages: role of IL-10 and ERK1/2 kinase signaling. *Br. J. Pharmacol.* **145**, 441–448 (2005).
115. Banerjee, A., Gugasyan, R., McMahon, M. & Gerondakis, S. Diverse Toll-like receptors utilize Tpl2 to activate extracellular signal-regulated kinase (ERK) in hemopoietic cells. *Proc. Natl. Acad. Sci. USA* **103**, 3274–3279 (2006).
116. Kaiser, F. *et al.* TPL-2 negatively regulates interferon-beta production in macrophages and myeloid dendritic cells. *J. Exp. Med.* **206**, 1863–1871 (2009).
117. Arima, K. *et al.* Distinct signal codes generate dendritic cell functional plasticity. *Sci. Signal.* **3**, ra4 (2010).
118. Bedard, K. & Krause, K.H. The NOX family of ROS-generating NADPH oxidases: physiology and pathophysiology. *Physiol. Rev.* **87**, 245–313 (2007).
119. Binder, C.J. *et al.* Innate and acquired immunity in atherosclerosis. *Nat. Med.* **8**, 1218–1226 (2002).
120. Imai, Y. *et al.* Identification of oxidative stress and Toll-like receptor 4 signaling as a key pathway of acute lung injury. *Cell* **133**, 235–249 (2008).
121. Riedl, M.A. & Nel, A.E. Importance of oxidative stress in the pathogenesis and treatment of asthma. *Curr. Opin. Allergy Clin. Immunol.* **8**, 49–56 (2008).
122. Gelderman, K.A. *et al.* Macrophages suppress T cell responses and arthritis development in mice by producing reactive oxygen species. *J. Clin. Invest.* **117**, 3020–3028 (2007).
123. Manicassamy, S. *et al.* Activation of β-catenin in dendritic cells regulates immunity versus tolerance in the intestine. *Science* (in the press).
124. Moro, K. *et al.* Innate production of T(H)2 cytokines by adipose tissue-associated c-Kit(+)Sca-1(+) lymphoid cells. *Nature* **463**, 540–544 (2010).
125. Saenz, S.A. *et al.* IL25 elicits a multipotent progenitor cell population that promotes T_H2 cytokine responses. *Nature* **464**, 1362–1366 (2010).
126. Neill, D.R. *et al.* Nuocytes represent a new innate effector leukocyte that mediates type-2 immunity. *Nature* **464**, 1367–1370 (2010).
127. Gabrilovich, D.I. & Nagaraj, S. Myeloid-derived suppressor cells as regulators of the immune system. *Nat. Rev. Immunol.* **9**, 162–174 (2009).
128. Swamy, M., Jamora, C., Havran, W. & Hayday, A. Epithelial decision-makers: in search of the 'epimnunome'. *Nat. Immunol.* (20 July 2010) doi:10.1038/ni.1905.
129. Hawiger, D. *et al.* Dendritic cells induce peripheral T cell unresponsiveness under steady state conditions *in vivo*. *J. Exp. Med.* **194**, 769–779 (2001).
130. Geijtenbeek, T.B. *et al.* Mycobacteria target DC-SIGN to suppress dendritic cell function. *J. Exp. Med.* **197**, 7–17 (2003).